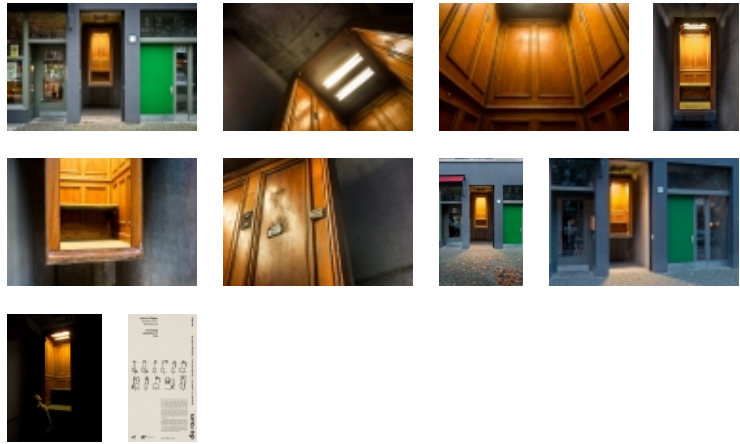


# die raum



## upcoming

2018 0035 jens settergren

## past exhibitions

2017 0034 bodil nielsen

2017 0033 anders bonnesen

2017 0032 mariana mauricio

2017 0031 lone haugaard madsen

2017 0030 marianne vierø

2016 0029 pierre-olivier arnaud

2016 0028 poul pedersen  
with anders bonnesen

2016 0027 gitte broeng  
and lasse krog møller

## 2014 0021 otavio schipper: *elevator music / fahrstuhlmusik*

september 12 – october 26, 2014

viewable 24 hours

vernissage on thursday, september 11, 19 h

Otavio Schipper's installation for **die raum** consists of a single object: an antique wooden elevator cabin suspended from the ceiling. Installed as an open chamber, and hanging high in the space as if caught in mid-motion, the object arouses associations with the old Paternoster cyclic elevator system – characterized by its slow, continuous looping movement, similar to the counting of rosary beads. The elevator is a popular cultural trope, heavily charged with a myriad of associations: ascendance and transcendence, as a "vertical corridor of death", as a connecting link between different realms (real and illusory, the conscious and the subconscious), as a reference to the age of modernity and the urge to expand vertically, exemplified by the futuristic concept of the "space elevator".

Presented here as "unhinged" and displaced, the elevator cabin in **die raum** suggests a predominantly subjective experience of time and space. Using one object to speak about others, the installation cites the "thought experiment" or Gedankenexperiment in theoretical physics, which posits hypothetical scenarios that allow for qualified assertions regarding the nature of time and space.

In his work Otavio Schipper examines the perception of time, history and fiction and the cultural memory of objects – forging links between objects, rather than constructing them.

[www.otavioschipper.com](http://www.otavioschipper.com)

The project is sponsored by

